

Concept of Sustainable Management

The CITIZEN Group has been operating for over 100 years based on its corporate philosophy of “Loved by Citizens, Working for Citizens.” Starting in FY2019, our 101st year in business, we are promoting “Sustainable Management” to solve social issues through our business. Sustainable management means not only providing good products and services, but also expanding our business while earning the trust of our stakeholders and continuously improving our corporate value through management that takes into consideration social issues such as human rights and the global environment throughout the value chain.

CITIZEN Group's Value Creation Story

Inputs

(As of March 2024)



Financial capital

Total assets JPY **415.4** billion

Net assets JPY **256.1** billion



Intellectual capital

Number of patents owned by the Group Over **5,000**

Number of trademarks owned by the Group Over **5,000**



Manufacturing capital

Capital expenditure JPY **22.0** billion

Production structures mainly in Japan, China and Thailand



Social capital

Globally expanded supply chain network



Human capital

Number of employees **14,817**

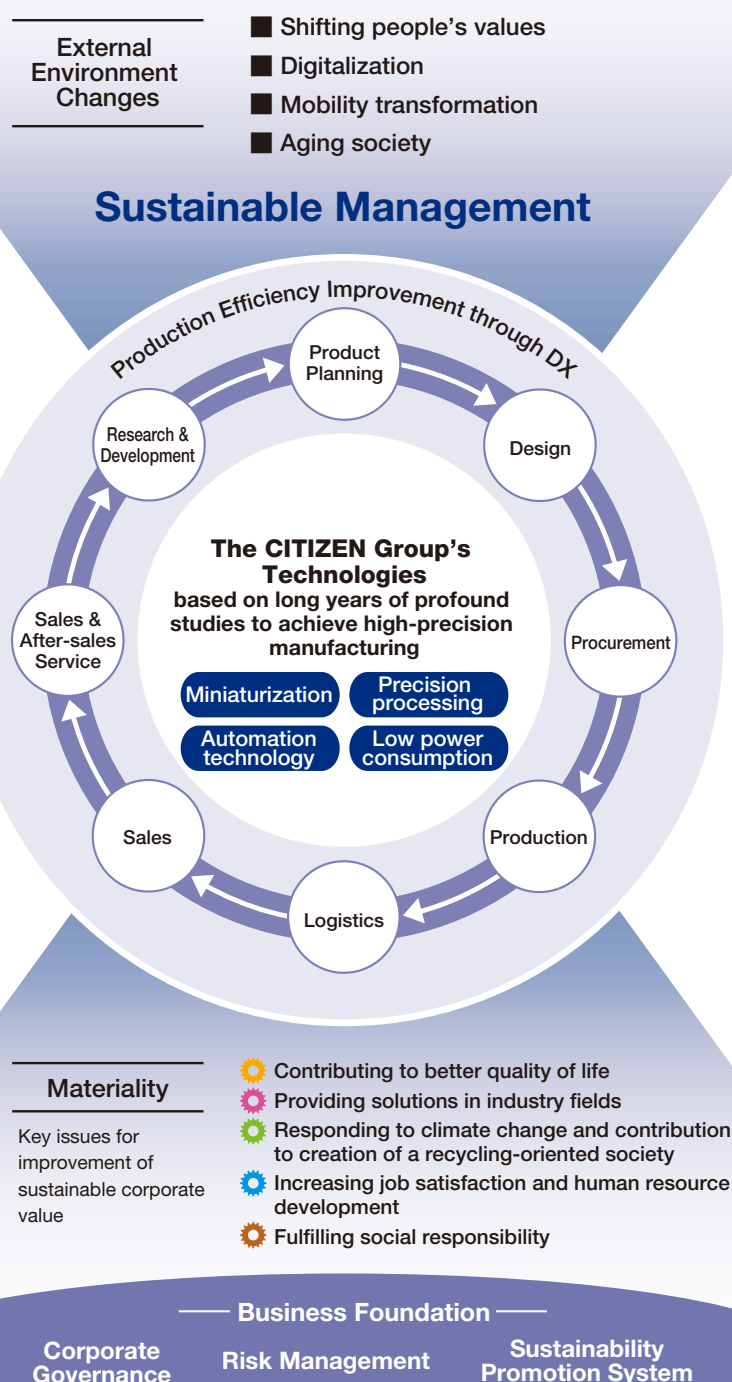


Natural capital

Total energy consumption **1,111** thousand GJ

Water intake **1,674** thousand m³

Recycling rate **92%**



In light of the medium and long-term changes in the environment, The CITIZEN Group will leverage the Group's strengths and capital to address materiality (key issues for the sustainable enhancement of corporate value) in both its business activities and business infrastructure. By creating social, environmental, and economic value that contributes to solving social issues, we aim to be loved by and work for citizens, as well as contribute to the achievement of the SDGs (Sustainable Development Goals).

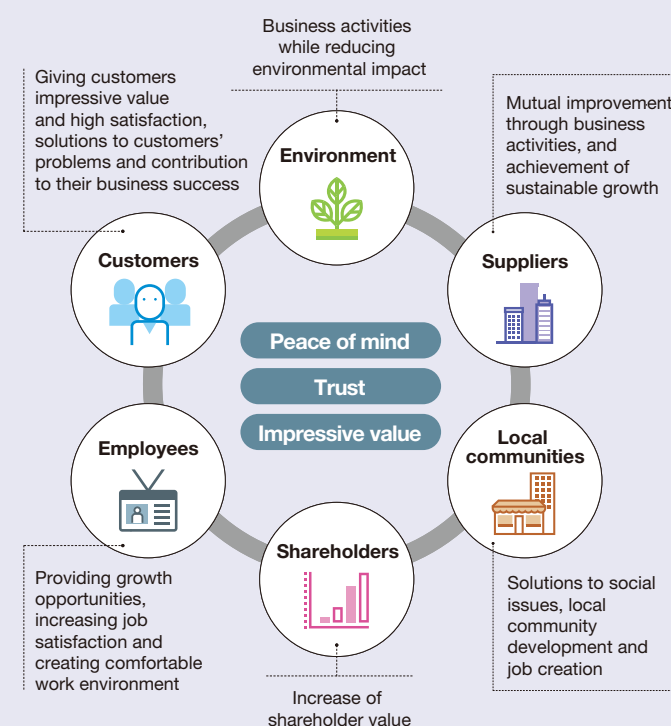
Outputs

Providing sustainable products

Products and Services

Watches, machine tools, devices, electronics and others

Outcomes



The CITIZEN Group's Long-term Vision

Crafting a new tomorrow