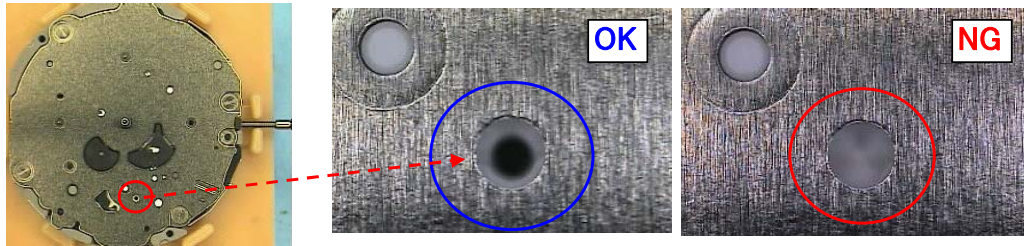


# Cal.JR00/10/20 Hands Fitting Manual

## PREPARATIONS BEFORE HANDS SETTING

CONFIRM IF THERE IS A HOLE LIKE THE FOLLOWING "OK" PICTURE.

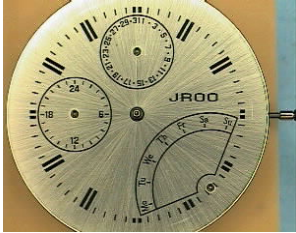
\*IF THE HOLE IS FILLED IN LIKE THE FOLLOWING "NG" PICTURE, PULL THE CROWN TO THE 1ST CLICK POSITION AND TURN CLOCKWISE TO ADJUST THE POSITION OF THE HOLE.



AFTER CONFIRM, PULL THE CROWN TO THE 2ND CLICK POSITION.

### ①SET THE DIAL

SET THE DIAL AS THERE IS NO GAP BETWEEN THE MOVEMENT AND DIAL.  
BE CAREFUL NOT TO PUSH OR TURN THE CROWN.

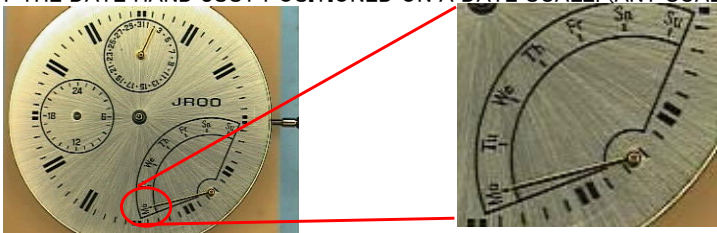


### ②SET THE DATE AND DAY HANDS.

1.SET THE DAY HAND ON THE SCALE THAT IS THE LEFT EXTREMITY POSITION OF THE RETROGRADE INDICATOR.

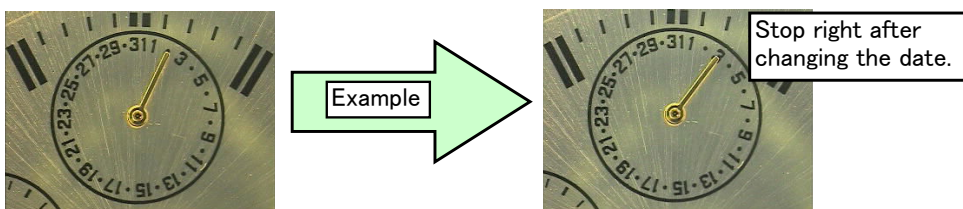
IN CASE OF THE FOLLOWING PICTURE, THE LEFT EXTREMITY IS "Mo(MONDAY)" POSITION.

2.SET THE DATE HAND JUST POSITIONED ON A DATE SCALE. (ANY SCALE IS ACCEPTABLE.)



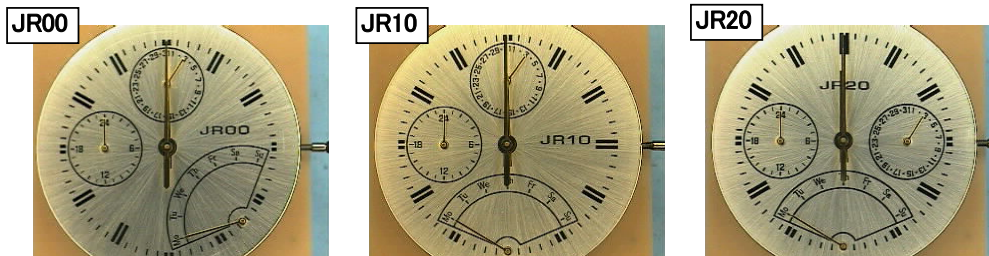
### ③PREPARATION FOR SETTING 24HOUR, CENTER HOUR, MINUTE AND SECOND HAND

TURN THE CROWN CLOCKWISE SLOWLY AND STOP RIGHT AFTER CHANGING THE DATE.



### ④SETTING THE 24HOUR, CENTER HOUR, MINUTE AND SECOND HAND.

SET THE 24HOUR, CENTER HOUR, MINUTE AND SECOND HAND AT 12H (24H) POSITION.



### ◆THE WAY TO CHECK THE FUNCTION.

1.CONFIRM THE SET HAND ARE KEPT IN PARALLEL.

2.PUSH THE CROWN TO THE 1ST CLICK POSITION.

THEN, TURN THE CROWN COUNTER-CLOCKWISE TO CONFIRM THE DATE HAND MOVES QUICKLY.

3.KEEP THE CROWN POSITION IN THE 1ST CLICK POSITION.

THEN, TURN THE CROWN CLOCKWISE TO CONFIRM THE DAY HAND MOVES QUICKLY AND FLYING BACK.

4.PULL THE CROWN TO THE 2ND CLICK POSITION.

THEN, TURN THE CROWN CLOCKWISE TO CONFIRM THE HOUR AND MINUTE HANDS MOVES QUICKLY.

ALSO CONFIRM THAT THE CHANGING OF THE DATE AND DAY HAND.